



A GUIDE TO

How Electric Meters Work

Electric meters accurately measure and monitor power consumption. Whether you are a renter or a homeowner, knowing the basics of how these devices function will help you better understand how your power usage is measured when determining your monthly electric utility expense.

TYPES OF ELECTRIC METERS

Two primary electric meter types prevail in residential settings - analog and digital. Both types gauge electricity usage in kilowatt hours (kWh), which represents the energy consumed over a specific time frame. Although both are dependable and accurate, they use different mechanisms to measure the amount of electricity used.

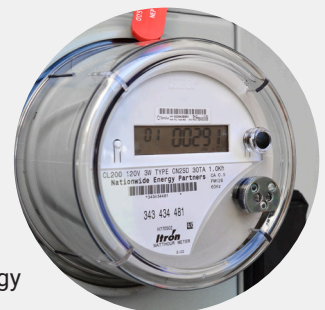
Analog Meters

Analog or electromechanical meters employ a rotating disc or wheel to measure energy consumption. These meters are familiar sights on the sides of houses. Typically requiring manual readings, analog meters function by calculating the total energy consumed based on rotational speed. Multiple dials or counters display the cumulative energy consumption.



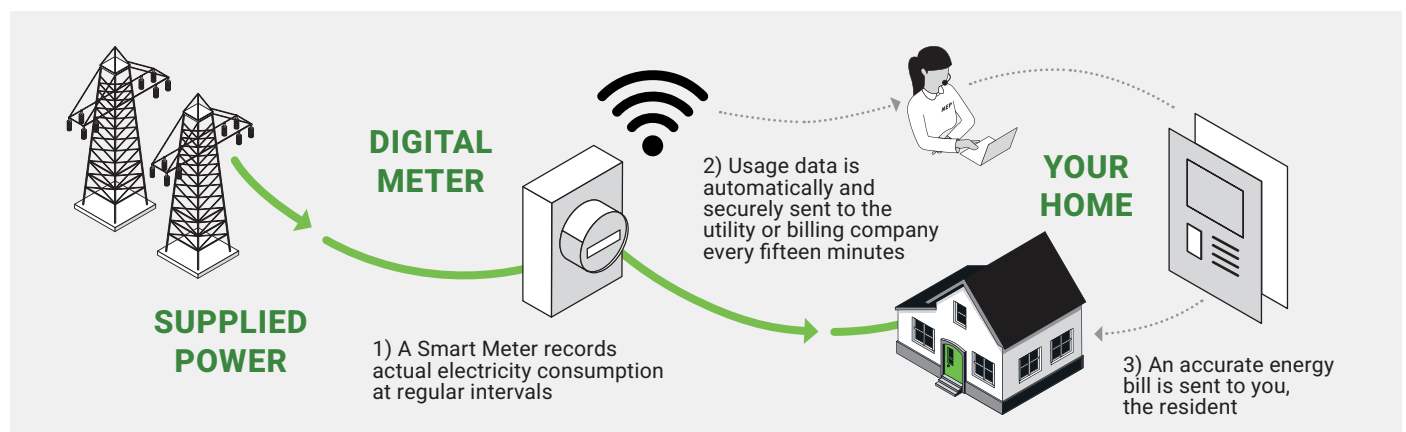
Digital Meters

Digital meters, often called smart meters, have replaced analog meters in many regions of the country. These electronic devices harness solid-state technology to offer more advanced features than analog meters. Sporting a digital display, they provide real-time power usage readings, eliminating the need for manual meter readings.



DIGITAL METERS ARE SMART METERS

Smart electric meters measure power consumption by closely monitoring the flow of electricity entering a home. The digital meter connects to the main power supply to measure the current flow and calculate the total power used. These meters continually monitor this energy use allowing for incremental readings every fifteen minutes, as well as daily, monthly, and yearly reports.



ELECTRIC METERING BENEFITS

Electric meters offer numerous advantages benefiting both renters and homeowners, regardless of which type is used where you live.

ACCURATE BILLING

Electric meters facilitate accurate power consumption measurement, ensuring that billing is carried out correctly. This precision fosters fair and transparent billing practices.

ENERGY MONITORING

Electric meters provide power consumption information, pulled in 15-minute increments enabling homeowners, communities, and residents to track their energy usage patterns. This awareness empowers individuals to make well-informed energy decisions, reducing costs and improving efficiency.

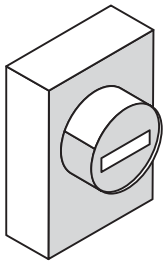
LOAD BALANCING

Digital smart meters, in particular, excel at assisting in load balancing. They aid utility companies in identifying periods of high demand, allowing them to optimize power distribution and help prevent blackouts.

REMOTE METER READING

Digital smart meters eliminate the need for manual meter readings. Companies can remotely access digital meters to retrieve consumption data, streamlining the billing process and reducing operational costs.

IS MY ELECTRIC METER WORKING CORRECTLY?



Electric meters are incredibly reliable and accurate. Smart meters, like those read by Nationwide Energy Partners (NEP), are rigorously tested for accuracy before they leave the manufacturing facility, where they are independently certified for accuracy. They are then tested prior to installation and during routine maintenance checks over their lifetime. Further, smart electric meters allow usage to be read remotely, removing the need to estimate meter reads, so you are billed for your actual electric usage in your home.

As noted, electric meters are incredibly reliable and accurate. All NEP-read electric meters meet stringent American National Standards Institute (ANSI) and Institute of Electrical and Electronics Engineers (IEEE) standards from the factory. In addition to factory testing, NEP-serviced communities provide residents with the ability to request a one-time, incremental test of their meter's accuracy. These tests are performed by an independent third-party testing facility. Over our 25 years of operations, we have conducted hundreds of these tests, and 100% of the meters tested have been certified as accurate.

“ Over our 25 years of operations... 100% of the meters tested have been certified as accurate. ”



Have questions about your electric meter or your bill? Contact Resident Support:
877-818-2637 M-F 8a - 6p EST | ResidentSupport@NationwideEnergyPartners.com

